



XS2100 ELECTRONIC PRESSURE SWITCH

DC02XS2100-01

Features

- Silicon sensor with 316SS diaphragm
- Four independent switch points
- Switchable between psi, bar, Kpa and Mpa
- All adjustable values stored in non-volatile memory



Specifications

Range	Range Code
0 ~ 5 Psi	4
0 ~ 15 Psi	5
0 ~ 50 Psi	6
0 ~ 100 Psi	7
0 ~ 300 Psi	8

Range	Range Code
0 ~ 500 Psi	9
0 ~ 1000 Psi	10
0 ~ 3000 Psi	11
0 ~ 5000 Psi	12
0 ~ 10000 Psi	13

Overpressure: 3xURL for range code 4~9 (URL= Upper Range Limit)

2xURL for range code 10~11

1.5xURL for range code 12~13

Power supply: 18~36VDC; 110~260VAC

Output: 4~20mA

Switch: Type SPDT, electronic relays

Rating 10amps @ 125VAC; 7amps @ 250VAC; 7amps @ 30VDC

Display: 4-digit red LED

Adjustment: through Keypad

Alarm: 4 red LED

Deadband: adjustable 5 to 125% of full scale

Power consumption: <3W

Accuracy: 0.25%

Operation temperature: sensor: -40~85°C circuit: -25~85°C LED: -25~70°C

Compensated temperature: -20~70°C

Environment humidity: 0~100%RH

Housing material: Aluminum

Process connection: 316SS

Pressure connection: 1/2NPT, M20x1.5, G1/2, other connections on request

Electric connection: M20x1.5

Enclosure classification: IP65

Weight: 1.0kg

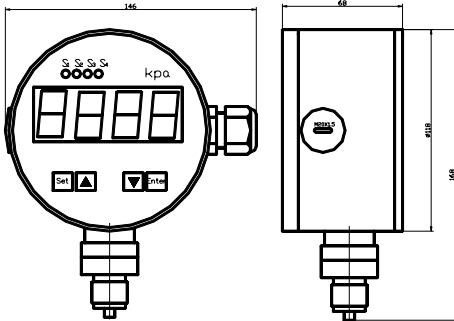
DEWER
 DEWER INSTRUMENTS LTD.
 18-MONTH WARRANTY



XS2100 ELECTRONIC PRESSURE SWITCH

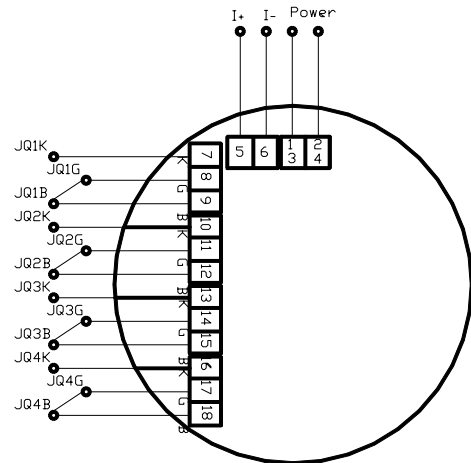
DC02XS2100-01

Dimensions(mm)

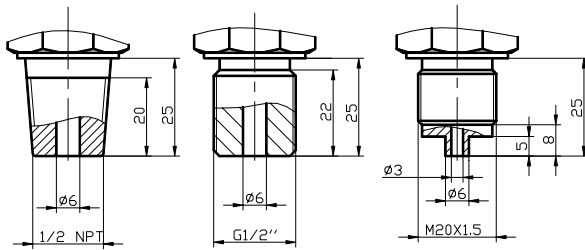


Electrical Connection

(Open the back cover)



Pressure Connection(mm)



Order Information

Basic Type

XS2100 Electronic Pressure Switch

Pressure Type

- GP __ Gage Pressure
- AP __ Absolute Pressure

Range Code

-Please see above tables for ranges.

Power Supply

- DC 18~36VDC
- AC 100~260VAC

Process Connection

- N1 __ 1/2 – 14 NPT
- G1 __ M20x1.5
- G3 __ G1/2
- Y __ Orders On Request

XS2100 GP 5 DC N1 (0-10Psi)

Note: Range in () is the adjusted range decided by customer